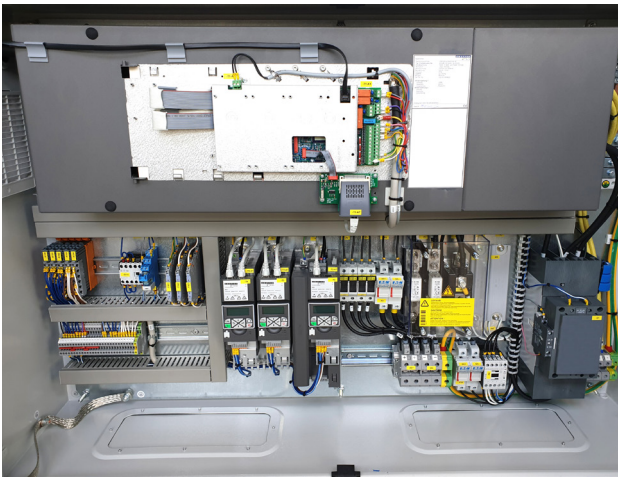


Meeting new environmental regulations with Emotron equipped electric and hybrid vessels

Shipping stands for almost 10% of all SO₂ and approximately 4% of CO₂ emissions world-wide and regulations to reduce the usage of diesel and heavy fuel oil tighten. As a result, the electrification of ships is a strong current trend.

As shipbuilders look for the best solutions to meet new standards like the 2020 sulfur cap requirements, Emotron offers all the experience to guide them to a sustainable future.



Emotron FDU IP2X liquid cooled, DSV 35, PP65 with special software for steering control and main drive.



Now more people can enjoy the German waterways without the added pollution.

Intelligent integrated automation and control

Marine certified electrical solutions from Emotron reduce emissions, noise and vibration.

The electric ship's propulsion system makes it possible for the intelligent integrated automation and control systems to deliver transformative operations and store energy for where and when it is needed the most.

Electric solutions for greater efficiency

Fuel efficiency is improved regardless of vessel speed by combining shaft generators with variable frequency drives optimizing the performance of main engines, auxiliary engines and propeller pitch.

Efficiency is further enhanced by DC-linked networks, allowing systems to draw on a variety of energy sources including shaft generators and batteries or fuel cells.

Complete solutions with European partner

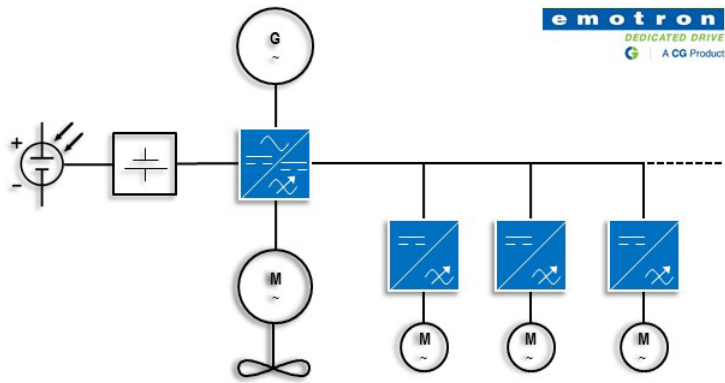
Some of the first projects for fuel efficiency optimization technology started in 2016 on inland water vessels with a European partner.

Ever since, CG Emotron is delivering complete solutions for marine vessels, including all drives, the control system and commissioning. The package also includes the main drive as selected by the shipbuilder.

State-of-the-art electric propulsion technology

When Berlin needed a modern, emission-free and quiet sightseeing boat as one of its tourist attractions and conference spots, the shipyard opted for a state-of-the-art, fully electric Emotron solution.

All the way from the first idea to the final trial, Emotron was the partner for this development. The package included the compact drive solution for the newly designed PM main drive in combination with a control system and auxiliary drives.



emotron
DEDICATED DRIVE
A CG Product

A simplified hybrid power supply solution from Emotron



DC supply from a battery pack or generator AC supply, or both.

DC supply from a battery pack or generator AC supply - or both

“For some ships we have supplied a fully electric set-up, where zero emissions and low noise have been important factors. Other vessels have had longer distance requirements and it has been necessary for the vessel to be able to switch between standard battery and engine power” says Rainer Gessing, CG Emotron Germany.

Marine certifications

Variable frequency drives with marine certification GL-DNV or BV are generally used for marine electrification projects.

At Emotron, expert knowledge is always at your fingertips. Your marine project team will follow you every step of the way. We manage a design review followed by an in-house survey when necessary and have well-established contacts with all the major certifying bodies.

We test all of your components individually before commissioning, for your peace of mind.

Worldwide service network

With a worldwide partner network and remote access solutions, we can offer service contracts to fit your needs. The complete service offer includes:

- ✓ Commissioning
- ✓ Training
- ✓ Test facilities
- ✓ 24/7 support
- ✓ Remote access
- ✓ Application diagnostics
- ✓ Maintenance
- ✓ Extended warranty
- ✓ Repairs



We put all our energy into saving yours.



CG Drives & Automation Sweden AB

Headquarters:
Mörsaregatan 12
Box 222 25
SE-250 24 Helsingborg
Sweden

Phone: +46 42 16 99 00
info.se@cglobal.com

To find your local Emotron contact, please visit www.emotron.com

emotron

DEDICATED DRIVE



A CG Product